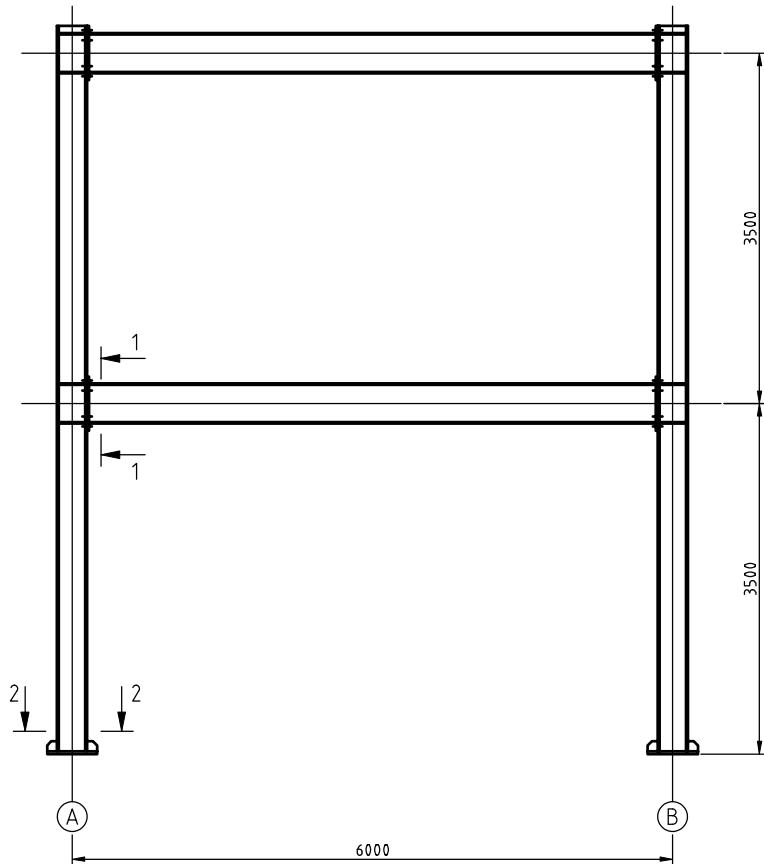
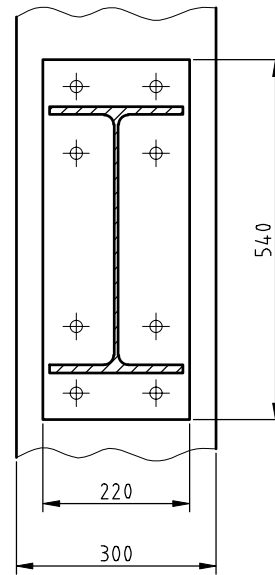


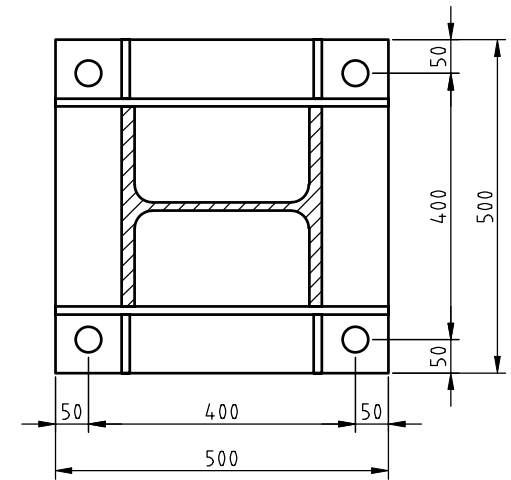
CADRU TRANSVERSAL AX 1 (sc. 1:50)



Sect. 1-1 (sc. 1:10)



Sect. 2-2 (sc. 1:10)



- [1.a] Open the "en_L07_suport.dwg" drawing and save it to your home directory using the patterns "Surname_Name_L07.dwg".
- [1.b] **The drawing units (DU) and plot units (PU) are mm.** Four plot scales are to be used for plotting this drawing: 1:100, 1:50, 1:20, 1:10, of which dimensions need be created for the last three ones. Create three more dimension styles, starting with the ISO-25 style as follows:
- * name: "1to50" - set the overall scale for dimension features to 50
 - * name: "1to20" - set the overall scale for dimension features to 20
 - * name: "1to10" - set the overall scale for dimension features to 10

- [1.c] Draw the missing annotations and dimensions in **model space**, using appropriate text height and dimension style. The annotations should appear on the **plotted drawing** of height 3.5mm (e.g. for the 1:50 view, use a text of height $3.5 \times 50 = 175$).
- [1.d] Set up layer lineweights:
- * AXE, 0.2 mm lineweight
 - * CONTUR, 0.4 mm lineweight
 - * COTE, 0.2 mm lineweight
 - * HASURI, 0.2 mm lineweight
 - * INVIZIBILE, 0.09 mm lineweight
 - * SUBTIRI, 0.09 mm lineweight
 - * TEXTE, 0.2 mm lineweight

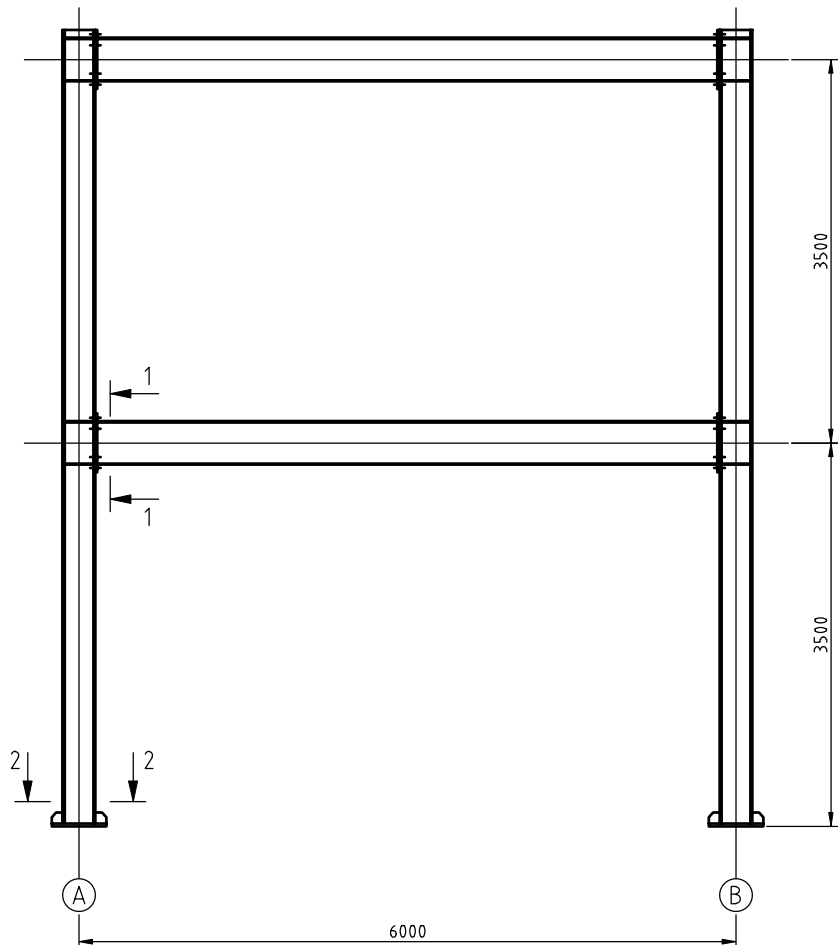
- [2.a] Switch to paper space (Layout1).
- [2.b] Setup the page for Layout1 as follows:
 - * Printer/plotter: DWF6 ePlot.pc3
 - * Paper size: ISO full bleed A3 (420x297mm)
 - * Plot area: Layout
 - * Plot offset: 0,0
 - * Plot scale 1:1
 - * Drawing orientation: Landscape

Univ. "Politehnica" din Timisoara Facultatea de Constructii		Structura metalica multietajata		pr. nr. 01/2005
proiectat	Ionescu	scara 1:100 1:50 1:10 15.11.05	Cadru transversal ax 1	faza PE
desenat	Ionescu			pl. nr. 01
verificat	S.A.			
contr. STAS	S.A.			
aprobat	S.A.			

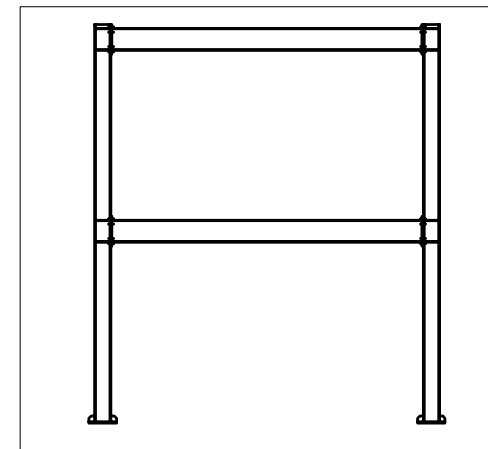
- [3.a] Insert the title block ("title_block_A3.dwg" file) at (0,0) coordinates, explode it, and edit the block annotations as in the figure above
- [3.b] Rename the layout to "plansal (A3)"

- [4.a] Make a new layer named "VPORT".
- [4.b] Set the "VPORT" layer as the current one and create four viewports (View>Viewports menu, or MVIEW command). Set the appropriate view for each viewport by:
 - Setting the viewport scale (1:50, 1:10, and 1:100)
 - Switching between paper space and model space in the layout view
 - Stretching the viewports
- [4.c] Create the "Note..." text at the bottom of the page in layout view, of height 3.5mm.
- [4.d] Switch to model space in the upper-right viewport (1:100) and freeze (only for that viewport!) the layers containing axes, dimensions and annotations.
- [4.e] Set the linetype scale to 0.5
- [4.f] Switch to paper space, freeze the "Vport" layer and plot the drawing to a file in your home directory.
- [4.g] The plotted file should look like in the following page, but with viewport boundaries invisible.

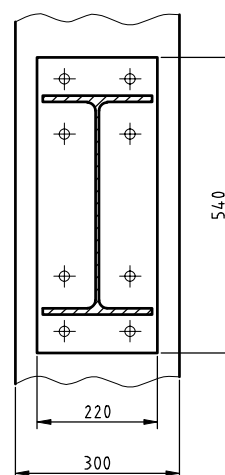
CADRU TRANSVERSAL AX 1 (sc. 1:50)



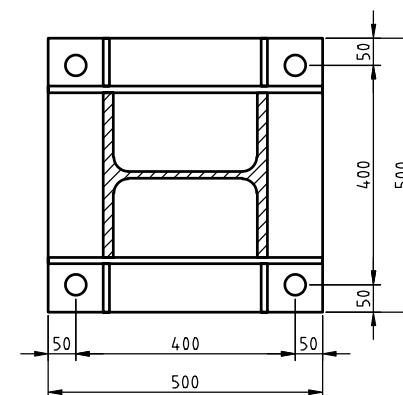
Schita cadru (sc. 1:100)



Sect. 1-1 (sc. 1:10)



Sect. 2-2 (sc. 1:10)



Nota:

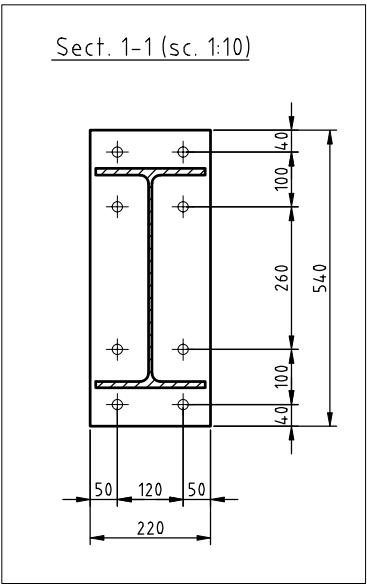
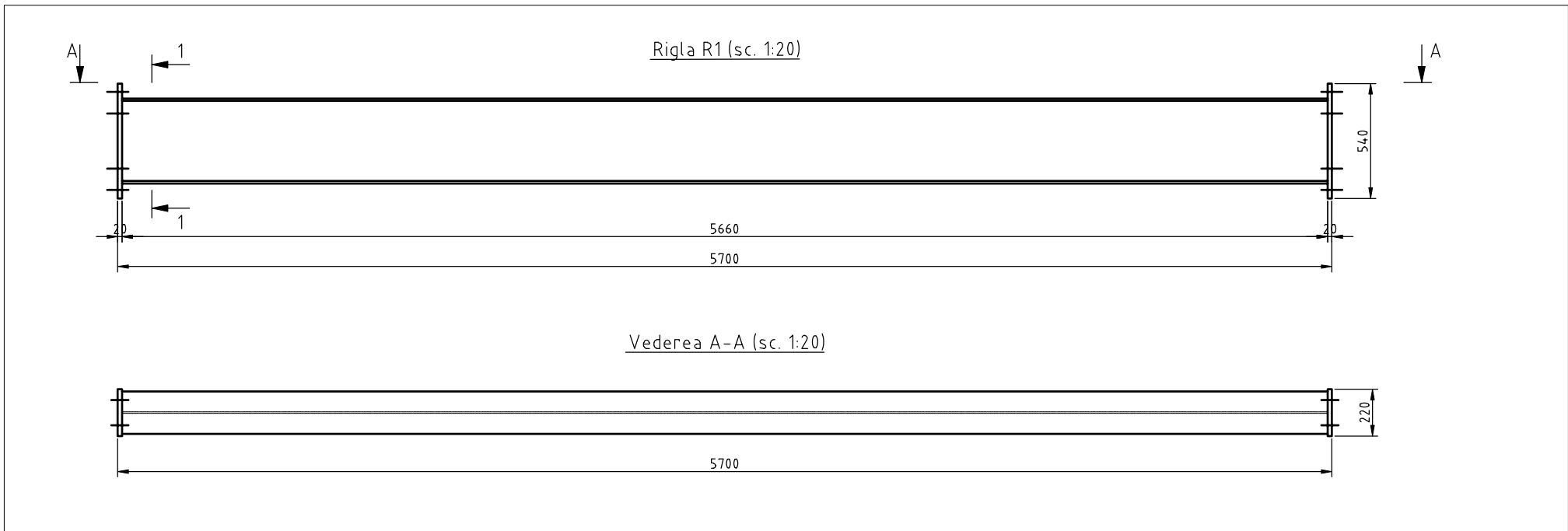
(1) Executie conform STAS 767/0-88.

(2) Pentru informatii suplimentare vezi caietul de sarcini.

Univ. "Politehnica" din Timisoara Facultatea de Constructii		Structura metalica multietajata		pr. nr. 01/2005
proiectat	Ionescu	Cadru transversal ax 1	scara 1:100	faza PE
desenat	Ionescu		1:50	pl. nr. 01
verificat	S.A.		1:10	
confr. STAS	S.A.		15.11.05	
aprobat	S.A.			

Univ. "Politehnica" din Timisoara Facultatea de Constructii			Structura metalica multietajata		pr. nr. 01/2005
proiectat	Ionescu		scara 1:20	Rigla R1	faza PE
desenat	Ionescu		1:10		pt. nr. 01
verificat	S.A.				
contr. STAS	S.A.				
aprobat	S.A.		15.11.05		

- [5.a] Create a copy of the "plansa1 (A3)" layout.
- [5.b] Rename it to "plansa2 (A3)"
- [5.c] Erase existing viewports and create two new viewports as in the following page
- [5.d] Modify the title block as in the figure above
- [5.e] Freeze the "Vport" layer and plot the drawing to a file in your home directory



Univ. "Politehnica" din Timisoara Facultatea de Constructii		Structura metalica multietajata		pr. nr. 01/2005
proiectat	Ionescu	scara 1:20	Rigla R1	faza PE
desenat	Ionescu	1:10		pl. nr. 02
verificat	S.A.			
confr. STAS	S.A.			
aprobat	S.A.	15.11.05		