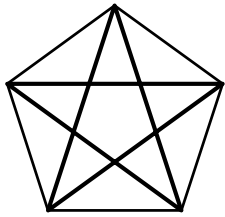


[1.a] Save your drawing to your home directory under the name Surname_Name_L02a.dwg

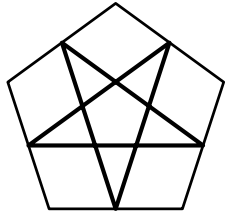
[1.b] Set LIMITS to 0,0 and 120,80

[1.c] Use Zoom/All to zoom to the current drawing limits.

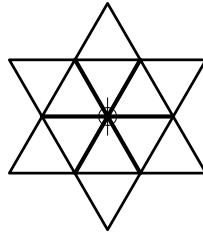
[1.d] The drawings may be located anywhere on the drawing area.



[2] Draw a star, starting from a pentagon inscribed in a circle of radius 6. Use ENDPOINT osnap.



[3] Draw a star, starting from a pentagon inscribed in a circle of radius 6. Use MIDPOINT osnap.

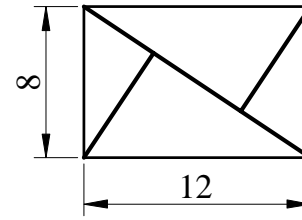


[4.a] Set the point style to the shape shown in the figure, and of size 1.0 in absolute units.

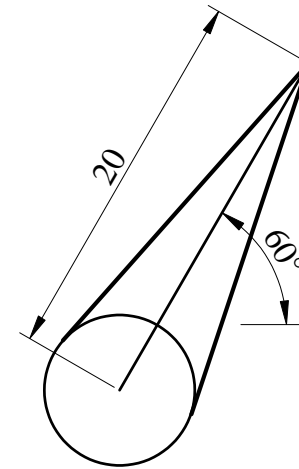
[4.b] Draw a point

[4.c] Draw the two exterior triangles using POLYGON object inscribed in a circle of radius 6. Use the NODE osnap to specify the center of the circle.

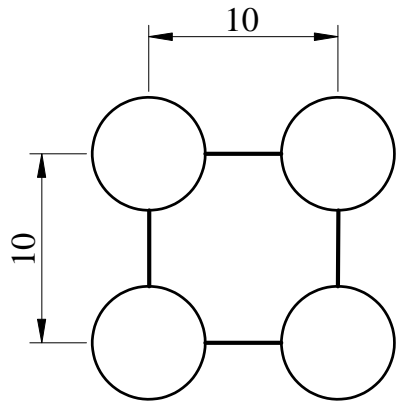
[4.d] Use INTERSECTION osnap to draw the interior LINES.



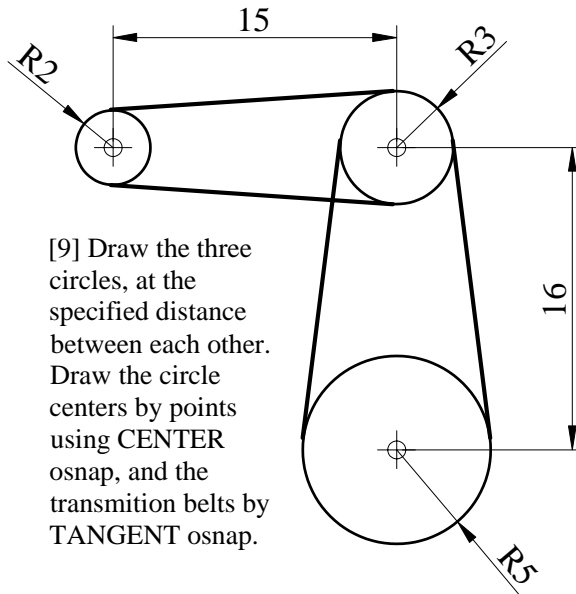
[5] Draw the figure above using the RECTANGLE command, and making use of ENDPOINT and PERPENDICULAR osnaps.



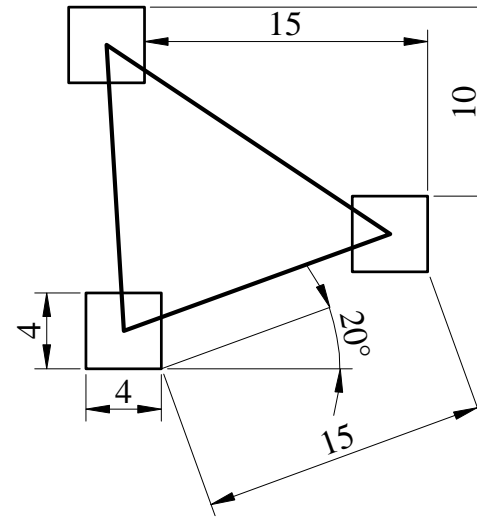
[6] Draw a circle of radius 4 and a line 20 units long, at 60° to the horizontal, starting from the center of the circle. Complete the figure by two lines TANGENT to the circle.



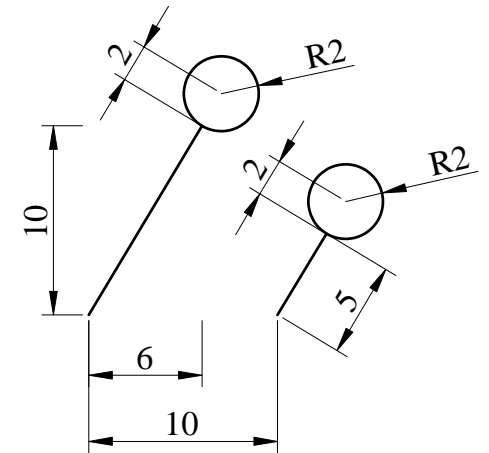
[7] Draw four circles of radius 3. Connect their QUADRANTS using lines.



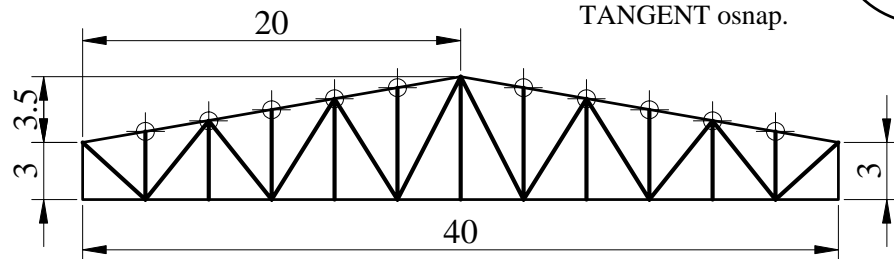
[9] Draw the three circles, at the specified distance between each other. Draw the circle centers by points using CENTER osnap, and the transmission belts by TANGENT osnap.



[10] Draw the three squares (RECTANGLE) at the specified distance between them, using the FROM feature. Use OBJECT SNAP TRACKING and POINT FILTERS features to connect the square "centers".



[11.a] Draw the left line.
[11.b] Draw the circle of radius 2, with its center at 2 units in the EXTENSION of the line.
[11.c] Draw the right line, PARALLEL to the existing one
[11.d] Add the circle to the top of the line as at [11.b]



[8] Draw the truss using the DIVIDE command, as well as NODE, PERPENDICULAR and ENDPOINT osnaps.

[12] Practice the ZOOM command with the REALTIME, ALL, EXTENTS, WINDOW and PREVIOUS options, as well as the PAN command.

Commands to use:

LINE, RECTANGLE, POINT, POLYGON, ELLIPSE, CIRCLE, ARC, DONUT, RAY, XLINE, QSAVE

[0.a] Save your drawing to your home directory under the name Surname_Name_L02b.dwg

[0.b] Draw a border of the drawing using construction lines (XLINE) and rays (RAY), with the corners 0,0 and 420,290

[0.c] Draw the figures [1]-[8]. Use absolute and relative, cartesian and polar coordinates, direct input of distance, ortho mode and polar tracking.

